

# \$599,900 - 62 Sunwood Crescent Sw, Medicine Hat

MLS® #A2215932

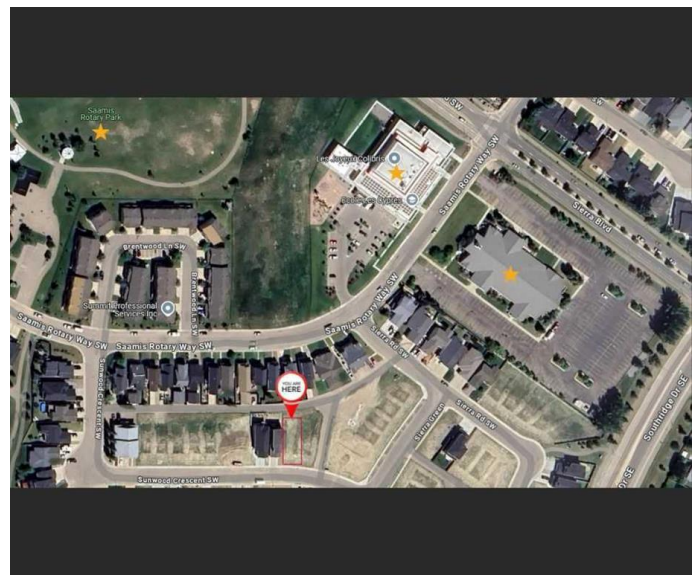
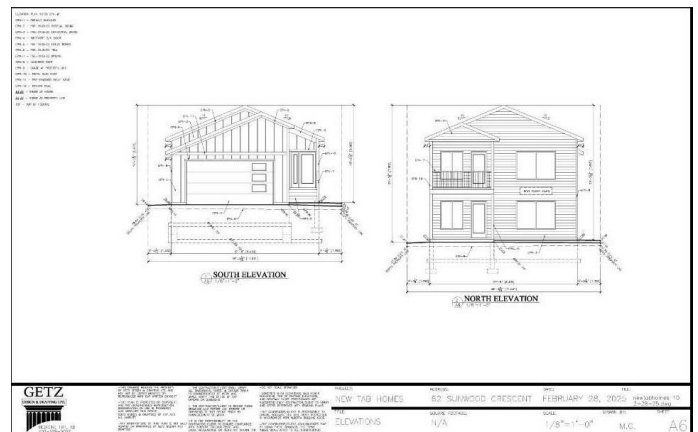
**\$599,900**

3 Bedroom, 3.00 Bathroom, 1,099 sqft  
Residential on 0.10 Acres

SW Southridge, Medicine Hat, Alberta

Donâ€™t let this chance pass; be the first to make this lovely new walkout bungalow your home. Built by New Tab Homes Ltd. and DP76 Construction, this thoughtfully designed property blends modern style with practical functionality. With an expected completion date of October 2025, there is still time to personalize the finishes to reflect your own style and preferences. Offering 1,099 square feet of beautifully planned living space, the open-concept layout creates a bright and welcoming atmosphere. The kitchen, dining, and livingroom areas are seamlessly connected, perfect for both everyday living and entertaining. The kitchen is equipped with a large center island, abundant counter space, and a convenient corner pantry. Patio door off the dinning room lead you to the covered balcony that overlooks the yard. The main floor also includes a laundry room, a two-piece guest bathroom, and a well-appointed primary bedroom featuring a walk-in closet and a luxurious 4 piece ensuite. Downstairs, the fully developed walkout basement will offer a large family room with direct access to a covered patio, 2 additional bedrooms, and a full 4 piece bathroom. A double attached garage and a spacious driveway ensure plenty of parking for your family and guests. \*\* RMS square footage is based on builder plans. Pictures are "similar to" a previous build.\*\*

Built in 2025



## Essential Information

MLS® #	A2215932
Price	\$599,900
Bedrooms	3
Bathrooms	3.00
Full Baths	2
Half Baths	1
Square Footage	1,099
Acres	0.10
Year Built	2025
Type	Residential
Sub-Type	Detached
Style	Bungalow
Status	Active

## Community Information

Address	62 Sunwood Crescent Sw
Subdivision	SW Southridge
City	Medicine Hat
County	Medicine Hat
Province	Alberta
Postal Code	T1B 0R5

## Amenities

Parking Spaces	4
Parking	Double Garage Attached, Driveway
# of Garages	2

## Interior

Interior Features	Kitchen Island, Pantry, Storage, Walk-In Closet(s)
Appliances	Central Air Conditioner
Heating	Forced Air, Natural Gas
Cooling	Central Air
Fireplace	Yes
# of Fireplaces	1
Fireplaces	Electric
Has Basement	Yes
Basement	Full, Walk-Out

## Exterior

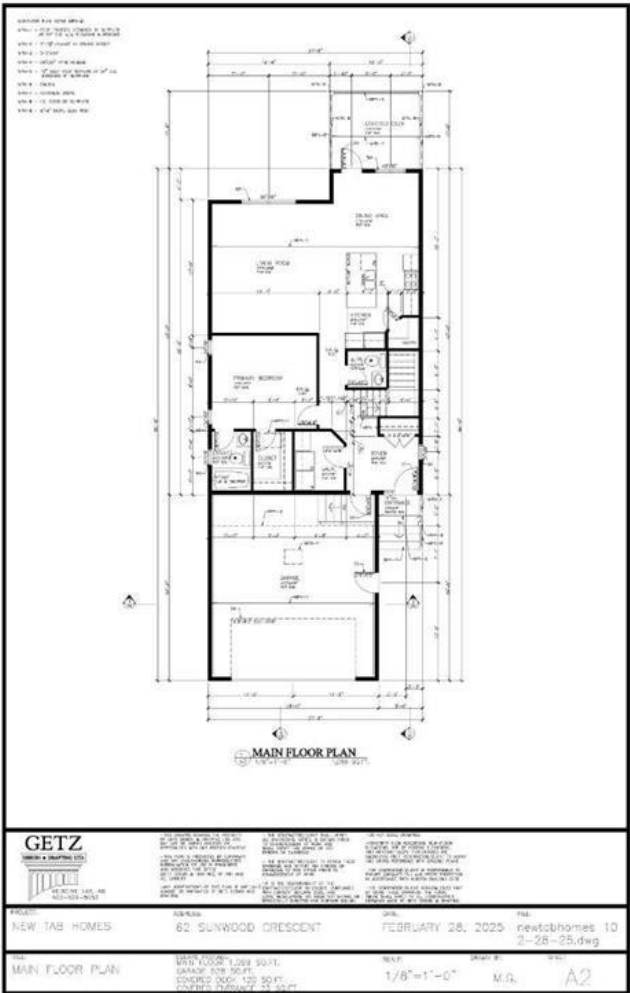
Exterior Features    None  
Lot Description    See Remarks  
Roof    Asphalt Shingle  
Construction    Vinyl Siding  
Foundation    Poured Concrete

**Additional Information**

Date Listed    April 29th, 2025  
Days on Market    74  
Zoning    R-LD

**Listing Details**

Listing Office    ROYAL LEPAGE COMMUNITY



Data is supplied by Pillar 9â„¢ MLSÂ® System. Pillar 9â„¢ is the owner of the copyright in its MLSÂ® System. Data is deemed reliable but is not guaranteed accurate by Pillar 9â„¢. The trademarks MLSÂ®, Multiple Listing ServiceÂ® and the associated logos are owned by The Canadian Real Estate Association (CREA) and identify the quality of services provided by real estate professionals who are members of CREA. Used under license.