

\$549,000 - 114 Wheatland Trail, Strathmore

MLS® #A2219080

\$549,000

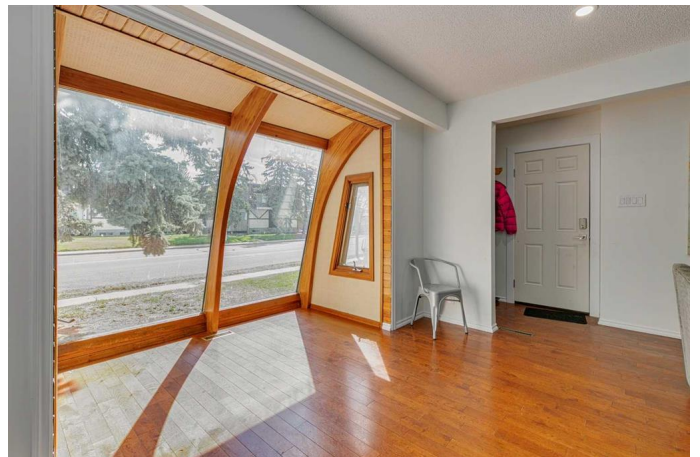
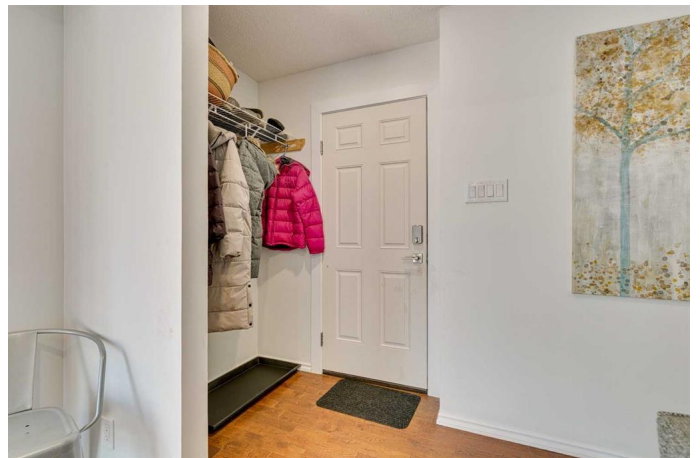
5 Bedroom, 2.00 Bathroom, 1,121 sqft
Residential on 0.22 Acres

Westmount_Strathmore, Strathmore, Alberta

Attention investors and buyers seeking a turnkey gem! This inviting bungalow in a prime, family-friendly community offers unmatched versatility, fresh upgrades throughout and great income potential. The main floor features 3 spacious bedrooms, complete with recently replaced carpet, a modern 4-piece bathroom and a brand-new stacked washer/dryer. The gourmet kitchen shines with a gas range, upgraded extended counter space, stone tile back splash and brand-new matching dishwasher and refrigerator—ideal for home chefs and entertaining.

The fully renovated illegal basement suite, with 2 bedrooms, is a perfect mortgage helper or guest retreat. It boasts a full kitchen with pantry and a recently upgraded 3-piece bathroom, its own washer/dryer, sound proof drywall upgrade in the ceiling and a separate side entrance for privacy. All flooring, including bedroom and living room carpet has been recently replaced in the basement and the fresh paint, brand-new blinds and additional lighting throughout really makes this property shine bright! Set on a large double lot with subdivision potential, this property is a dream for future development. The expansive fenced backyard is perfect for families or tenants, complemented by a detached single-car garage, attached carport, and 6 additional parking spaces.

Located steps from an elementary school, golf course, shopping, and trails, and just a



20-minute drive to Chestermere Lake, this home blends lifestyle with opportunity. Don't miss this move-in-ready investment or multigenerational haven—schedule your showing today!

Built in 1967

Essential Information

MLS® #	A2219080
Price	\$549,000
Bedrooms	5
Bathrooms	2.00
Full Baths	2
Square Footage	1,121
Acres	0.22
Year Built	1967
Type	Residential
Sub-Type	Detached
Style	Bungalow
Status	Active

Community Information

Address	114 Wheatland Trail
Subdivision	Westmount_Strathmore
City	Strathmore
County	Wheatland County
Province	Alberta
Postal Code	T1P 1A6

Amenities

Parking Spaces	7
Parking	Parking Pad, Single Garage Detached
# of Garages	1

Interior

Interior Features	See Remarks
Appliances	Dishwasher, Dryer, Electric Range, Gas Range, Microwave, Refrigerator, Washer, Washer/Dryer Stacked

Heating	Forced Air, Natural Gas
Cooling	None
Has Basement	Yes
Basement	Finished, Full

Exterior

Exterior Features	Private Entrance
Lot Description	Back Lane, Front Yard, Lawn, Level, Standard Shaped Lot
Roof	Metal
Construction	Concrete, Vinyl Siding, Wood Frame
Foundation	Poured Concrete

Additional Information

Date Listed	May 8th, 2025
Days on Market	19
Zoning	R1

Listing Details

Listing Office	Real Broker
----------------	-------------

Data is supplied by Pillar 9â„¢ MLS® System. Pillar 9â„¢ is the owner of the copyright in its MLS® System. Data is deemed reliable but is not guaranteed accurate by Pillar 9â„¢. The trademarks MLS®, Multiple Listing Service® and the associated logos are owned by The Canadian Real Estate Association (CREA) and identify the quality of services provided by real estate professionals who are members of CREA. Used under license.