

# \$322,500 - 1224, 8 Bridlecrest Drive Sw, Calgary

MLS® #A2219197

**\$322,500**

2 Bedroom, 1.00 Bathroom, 726 sqft

Residential on 0.00 Acres

Bridlewood, Calgary, Alberta

Welcome to 1224 8 Bridlecrest Drive SW, Calgary, AB

Discover the perfect blend of comfort and style in this beautifully updated 2 bedroom, 1 bathroom condo located in Bridlewood with easy access to parks, schools, shopping, and public transit.

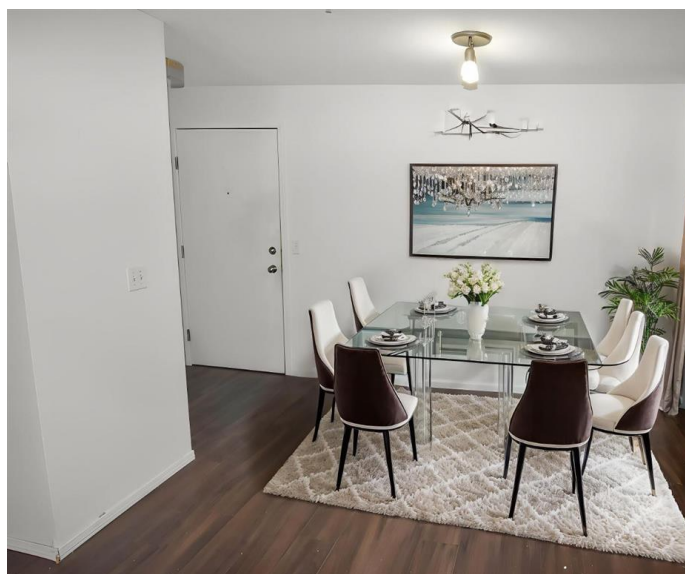
The inside features brand new flooring and fresh paint throughout, adding a fresh, modern feel to the space. The kitchen has been upgraded with newly installed quartz countertops, providing both elegance and durability for everyday living.

This spacious unit offers an open layout with ample natural light, a private balcony, and the convenience of in-suite laundry. Both bedrooms are spacious with lots of natural light.

Built in 2008

## Essential Information

MLS® #	A2219197
Price	\$322,500
Bedrooms	2
Bathrooms	1.00
Full Baths	1
Square Footage	726
Acres	0.00
Year Built	2008
Type	Residential



Sub-Type	Apartment
Style	Single Level Unit
Status	Active

### Community Information

Address	1224, 8 Bridlecrest Drive Sw
Subdivision	Bridlewood
City	Calgary
County	Calgary
Province	Alberta
Postal Code	T2Y0H6

### Amenities

Amenities	Park, Playground
Parking Spaces	1
Parking	Stall

### Interior

Interior Features	See Remarks
Appliances	Dishwasher, Electric Range, Washer/Dryer
Heating	Baseboard
Cooling	Other
# of Stories	4

### Exterior

Exterior Features	Balcony
Construction	Vinyl Siding, Wood Frame

### Additional Information

Date Listed	May 14th, 2025
Days on Market	37
Zoning	M-2

### Listing Details

Listing Office	Royal LePage METRO
----------------	--------------------

Data is supplied by Pillar 9â„¢ MLS® System. Pillar 9â„¢ is the owner of the copyright in its MLS® System. Data is deemed reliable but is not guaranteed accurate by Pillar 9â„¢. The trademarks MLS®, Multiple Listing Service® and the associated logos are owned by The Canadian Real Estate Association (CREA) and identify the quality of services provided by real estate professionals who are members of CREA. Used under license.