

\$299,900 - 326, 1535 Southview Drive Se, Medicine Hat

MLS® #A2222178

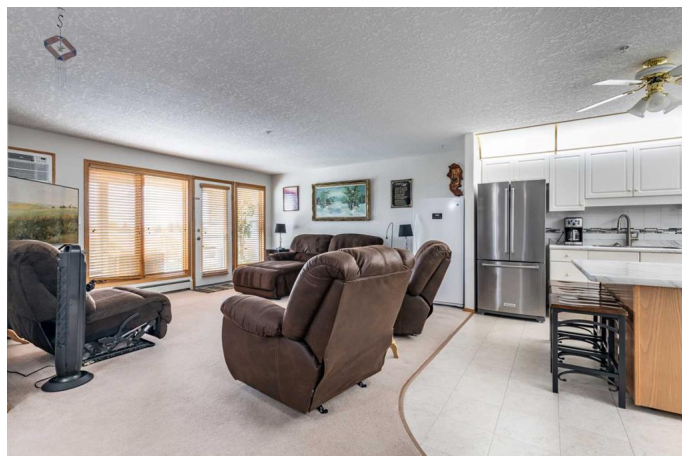
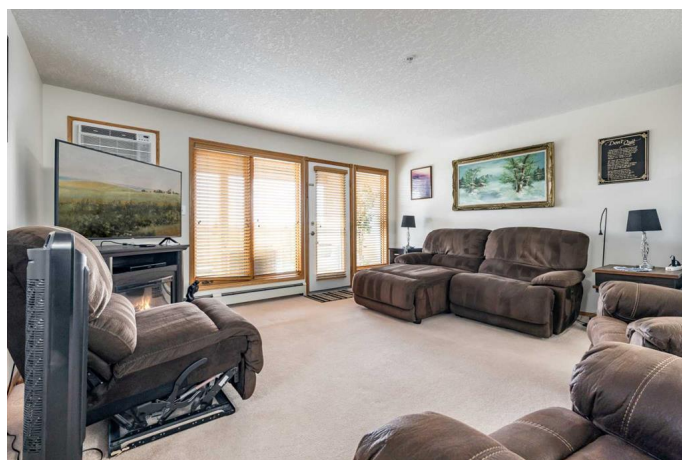
\$299,900

2 Bedroom, 2.00 Bathroom, 1,272 sqft

Residential on 0.00 Acres

Southview-Park Meadows, Medicine Hat, Alberta

Spacious, bright and centrally located! Welcome to Grandview Village, an amenity-rich and community minded building offering comfort, convenience, and an exceptional lifestyle. This spacious 1,272 sqft condo features 2 bedrooms and 2 bathrooms, with an open concept layout that seamlessly connects the living room, dining area, and kitchen. Functional and neutral, the kitchen is equipped with stainless steel appliances, a movable island for added storage and seating, updated laminate countertops, and a tiled backsplash. A large covered east-facing balcony offers the perfect spot to enjoy your morning coffee while taking in the sunrise, or a relaxing place to seek shade during the warm evenings. The primary bedroom is generously sized to accommodate full bedroom furniture and includes double closets along with a 4 pc ensuite. The second bedroom also features double closets and can easily function as a guest room, office, or den. In-suite laundry includes a full-size washer and dryer, cabinetry for storage, and space for a freezer. Residents at Grandview Village enjoy a wealth of amenities, including a heated indoor pool, hot tub, fitness centre, craft and games rooms, library, workshop, car wash, guest suites, two lounge areas for coffee and conversation, and a beautifully landscaped courtyard with outdoor seating. The building offers secure heated underground parking with your stall located just a few steps from the elevator,



along with a private storage unit. Located just steps from shopping, restaurants, banks, and more, this condo is perfectly situated for a walkable and convenient lifestyle. Condo fees include all utilities. Whether you're looking to downsize or simply enjoy a more relaxed, low-maintenance way of living, this bright and spacious home offers everything you need and more.

Built in 1997

Essential Information

MLS® #	A2222178
Price	\$299,900
Bedrooms	2
Bathrooms	2.00
Full Baths	2
Square Footage	1,272
Acres	0.00
Year Built	1997
Type	Residential
Sub-Type	Apartment
Style	Single Level Unit
Status	Active

Community Information

Address	326, 1535 Southview Drive Se
Subdivision	Southview-Park Meadows
City	Medicine Hat
County	Medicine Hat
Province	Alberta
Postal Code	T1B 4H8

Amenities

Amenities	Car Wash, Elevator(s), Fitness Center, Guest Suite, Indoor Pool, Parking, Party Room, Picnic Area, Snow Removal, Storage, Visitor Parking, Spa/Hot Tub, Workshop
Parking Spaces	1
Parking	Assigned, Parkade, Stall, Underground

Has Pool	Yes
----------	-----

Interior

Interior Features	Ceiling Fan(s)
Appliances	Dishwasher, Dryer, Range Hood, Refrigerator, Stove(s), Wall/Window Air Conditioner, Washer, Window Coverings
Heating	Baseboard, Natural Gas
Cooling	Wall/Window Unit(s)
# of Stories	4

Exterior

Exterior Features	Lighting, Rain Gutters
Lot Description	City Lot, Level
Construction	Brick, Stucco, Wood Frame
Foundation	Poured Concrete

Additional Information

Date Listed	May 21st, 2025
Days on Market	9
Zoning	R-MD

Listing Details

Listing Office	RIVER STREET REAL ESTATE
----------------	--------------------------

Data is supplied by Pillar 9â„¢ MLS® System. Pillar 9â„¢ is the owner of the copyright in its MLS® System. Data is deemed reliable but is not guaranteed accurate by Pillar 9â„¢. The trademarks MLS®, Multiple Listing Service® and the associated logos are owned by The Canadian Real Estate Association (CREA) and identify the quality of services provided by real estate professionals who are members of CREA. Used under license.