

\$294,400 - 148, 300 Marina Drive, Chestermere

MLS® #A2232899

\$294,400

2 Bedroom, 1.00 Bathroom, 829 sqft
Residential on 0.00 Acres

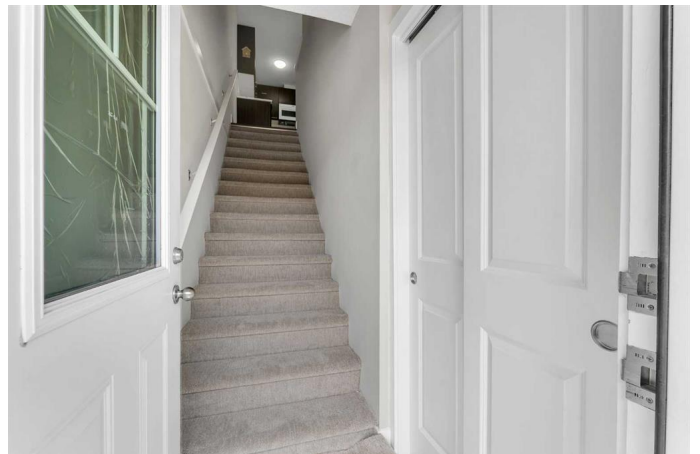
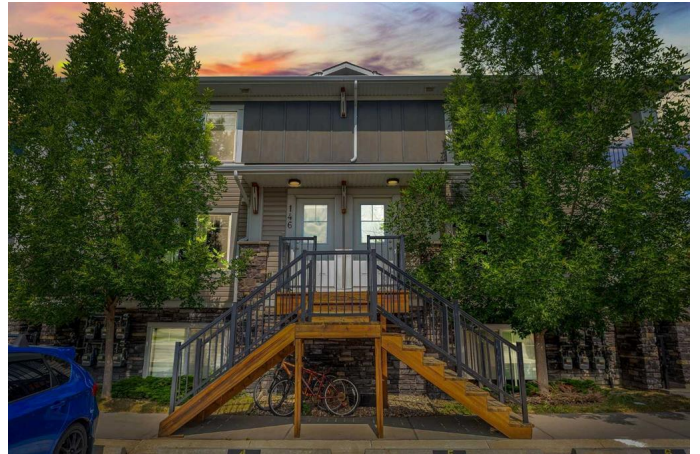
Westmere, Chestermere, Alberta

**LOW CONDO FEES!! ASSIGNED PARKING!!
2 BED 1 BATH!! AMAZING VALUE IN
CHESTERMERE STATION!!** Step inside and
enjoy the convenience of this well-designed
apartment-style home. The entry foyer
includes a front closet, and upstairs you'll find
a bright and open living space. The living area
features a large window and access to your
PRIVATE BALCONY – the perfect spot for
your morning coffee or evening unwind. The
kitchen is compact and functional, and both
bedrooms are nicely sized and share a 4-piece
bathroom. **LAUNDRY IS CONVENIENTLY
LOCATED ON THE SAME LEVEL! WALKING
DISTANCE TO EVERYTHING** – groceries,
dining, coffee spots, and everyday essentials!
Quick access to Chestermere Lake, green
spaces, and scenic trails makes it easy to
enjoy the outdoors. **A MOVE-IN-READY
OPTION FOR FIRST-TIME BUYERS,
INVESTORS, OR ANYONE LOOKING FOR
EASY LIVING IN A PRIME LOCATION!**

Built in 2012

Essential Information

MLS® #	A2232899
Price	\$294,400
Bedrooms	2
Bathrooms	1.00
Full Baths	1
Square Footage	829



Acres	0.00
Year Built	2012
Type	Residential
Sub-Type	Row/Townhouse
Style	Stacked Townhouse
Status	Active

Community Information

Address	148, 300 Marina Drive
Subdivision	Westmere
City	Chestermere
County	Chestermere
Province	Alberta
Postal Code	T1X 0P6

Amenities

Amenities	Visitor Parking
Parking Spaces	1
Parking	Stall

Interior

Interior Features	Open Floorplan, See Remarks
Appliances	Dishwasher, Dryer, Electric Range, Microwave Hood Fan, Refrigerator, Washer
Heating	Forced Air, Natural Gas
Cooling	None
Basement	None

Exterior

Exterior Features	Balcony, Other
Lot Description	Corner Lot
Roof	Asphalt Shingle
Construction	Vinyl Siding, Wood Frame
Foundation	Poured Concrete

Additional Information

Date Listed	June 19th, 2025
Days on Market	30
Zoning	RM3

Listing Details

Listing Office

Real Broker

Data is supplied by Pillar 9â,,ç MLSÂ® System. Pillar 9â,,ç is the owner of the copyright in its MLSÂ® System. Data is deemed reliable but is not guaranteed accurate by Pillar 9â,,ç. The trademarks MLSÂ®, Multiple Listing ServiceÂ® and the associated logos are owned by The Canadian Real Estate Association (CREA) and identify the quality of services provided by real estate professionals who are members of CREA. Used under license.